

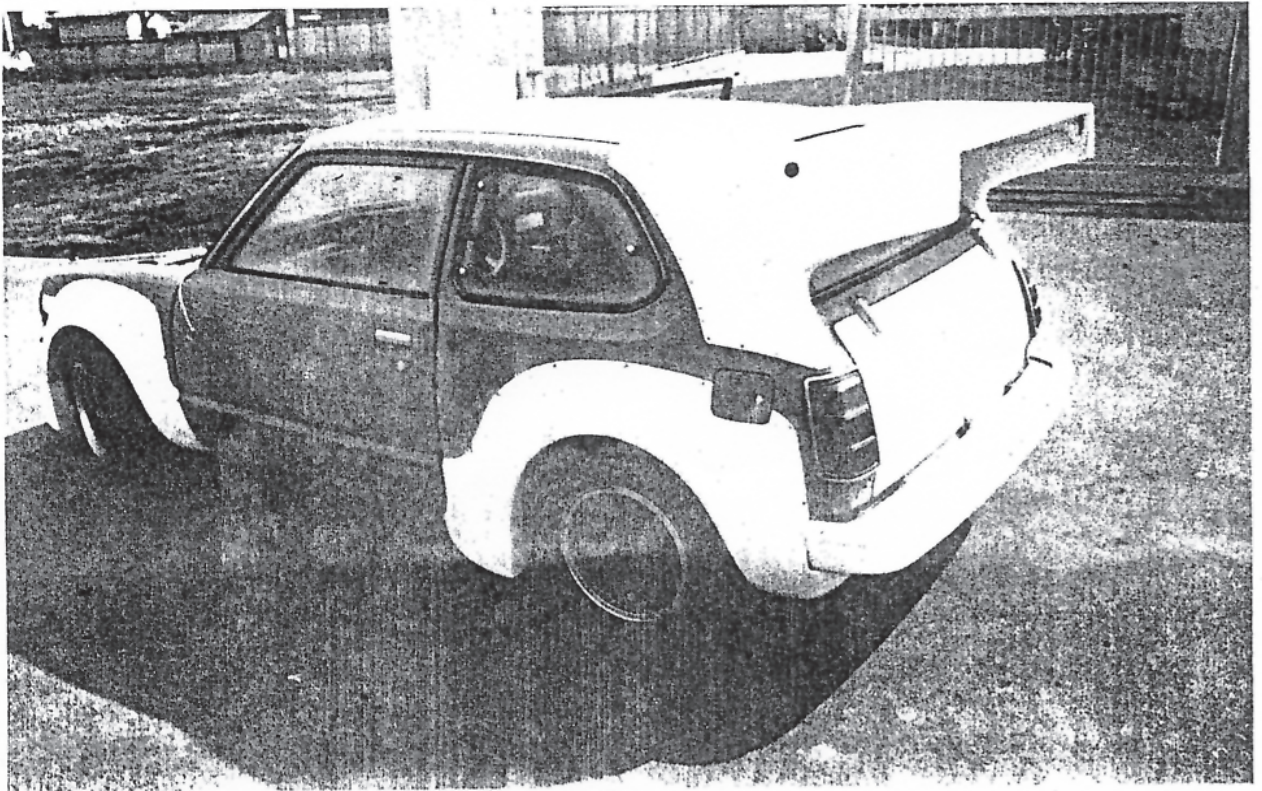
SHUNPIKER RACING



FOR INFORMATION ONLY

MS-II

MUGEN TYPE MS-II
(RACING EQUIPMENTS FOR HONDA CIVIC)



Mugen type MS-2 racing equipment for Honda Civic is newly provided for motor sports enthusiast who wish to convert his Honda Civic to fully comply with the regulation of F.I.A. international group 2 approved vehicle.

★ The vehicle having this specification can be contrary for traffic regulation and law on public road.

○ CAR HONDA CIVIC 1200

○ SPECIFICATION

Engine Type	4 cylinder in line SOHC 4-Stroke Water cooled
Bore & Stroke	73×76 mm
Capacity	1276 c.c.
Compression Ratio	11.0 : 1
HP. @ rpm.	115 ~ 125/7500 ~ 8000 rpm.
Torque @ rpm.	11.5 ~ 12.8 kgm @ 6000 ~ 7000 rpm.
Carburettor	CR 35 Keihin
Exhaust systems	4 2 1 Type